



# WOMEN IN LEADERSHIP SUMMIT

# LEADHERSHIP



Tuesday, March 24, 2026 • 8:30 AM - 12:30 PM EST  
The Grecian Center • 16300 Dix Toledo Rd • Southgate, MI 48195

#LeadHERship

# Welcome

Welcome to the **Women in Leadership Summit: LeadHERship – Navigating Your Journey.**

It is both an honor and a privilege to welcome you to this powerful gathering of leaders, change-makers, and visionaries. Today, we come together not only to connect, but to reflect, grow, and intentionally navigate the paths that shape our leadership and our impact.

At its core, this summit is rooted in a shared commitment to empowering women to lead with purpose, authenticity, and influence. Our mission is to create a space where voices are elevated, experiences are honored, and meaningful connections are cultivated—fueling both personal and professional growth.

Our vision is to build a community of leaders who are equipped, inspired, and supported to drive meaningful change within their organizations, communities, and across global landscapes—creating lasting impact across industries and generations.

As we navigate this journey together, we are reminded that leadership is not a destination—it is an evolving process shaped by resilience, courage, and the willingness to lift others along the way. Each conversation, each connection, and each shared experience today contributes to a larger movement of advancing LeadHERship.

In addition to the powerful conversations you will experience, this summit offers intentional opportunities to build meaningful connections, expand your network, and engage with leaders across industries. We encourage you to lean into these moments—introduce yourself, share your story, and create relationships that extend beyond today.

This conference is made possible through the dedication and generosity of many. We extend our deepest appreciation to our sponsors, our board members, partner organizations, and supporters whose investment fuels this work.

We thank our speakers, presenters, and moderators for sharing their wisdom, lived experience, and leadership. We honor our volunteers, planning committee, production team, and staff whose attention to detail and care have created a meaningful experience for us all.

And to every attendee—whether this is your first time joining us or you return annually—thank you for your presence, your curiosity, and your commitment to continuing the work of leadership and community-building.

We invite you to fully engage, lean into the conversations, and embrace the opportunities ahead. May today inspire you to lead boldly, navigate with intention, and continue charting a path that creates impact for yourself and for others.

With gratitude,



*Darlene King-Turner*

CEO, The Unity Collaborative (TUC)

# Sponsors



**Corewell**  
**Health<sup>TM</sup>**

# Board of Directors



**Ovell Barbee**  
Principal  
Ovell & Associates  
Ask Ovell



**Donnell Campbell**  
Global Head of DEI & CSR  
Allegis Global Solutions



**Haven Cockerham**  
CEO/President  
Cockerham & Associates



**Beth Correa**  
Retired Financial Services Executive  
Flagstar Bank



**Maurice Evans**  
CEO  
Elite School Management



**Kenneth Mathies**  
Senior Advisor  
Independent Executive  
Consultant



**Catherine Susko**  
VP-Workforce Planning,  
Development & Belonging  
Henry Ford Health



**Angela Thompkins**  
VP, Chief Diversity Officer  
Consumers Energy



**Darlene King - Turner**  
CEO  
The Unity Collaborative



**Lori Walker**  
VP, Inclusion Operations Manager  
Comerica Bank

# Advisory Board



**Valissa Armstead**  
Sr. Director of Belonging  
Corewell Health



**LaToya Harvey**  
Licensed Master Social Worker  
EmpowerU Social Work Solutions



**Nancy Heaston**  
National Talent Acquisition  
Manager-Retail Banking  
Division  
Comerica Bank



**Tanya Hewitt-Smith**  
Director of Diversity, Equity, &  
Inclusion  
City of Kalamazoo



**Megan Johnson**  
Project Manager  
Proactive Technology Management



**Jody Guastella Jones,  
CDP**  
Diversity & Inclusion Manager  
Mercedes Benz Financial  
Services USA, LLC.



**Dr. Donyale Padgett**  
Vice Provost - Inclusive  
Excellence  
Wayne State University



**Jarrett Waddy**  
Director of Diversity, Equity,  
& Inclusion Operations,  
ERG Development  
AAA - The Auto Club Group



**Jordan Walker**  
Diversity, Equity, and Inclusion  
Manager  
Consumers Energy



**Harry Weaver III**  
Chief of Diversity, Equity,  
and Inclusion  
Oakland County



**Brandalynn Winchester- Middlebrook**  
Director of Diversity, Equity, & Executive VP- Chief  
People & Purpose Officer  
Lake Trust Credit Union

# Engagement Board



**Alex Boesch, Ph.D.**  
Director of Educational &  
Strategic Initiatives  
Office of Inclusive Excellence  
Wayne State University



**Amanda Huszti-Vickers**  
Community Impact Manager  
Lake Trust Credit Union



**Jerry Price**  
Belonging Partner Advisor  
Corewell Health



**Lal Tluangi**  
DEI Specialist  
City of Kalamazoo



**Chelsey Wallace**  
Program Manager,  
Operations & ERG Development  
AAA - The Auto Club Group

# Our Partners



Mercedes-Benz  
Financial Services



# EVENT AGENDA

8:30 AM – 9:00 AM | BREAKFAST & NETWORKING

9:00 AM – 9:15 AM | WELCOME & OPENING REMARKS

PRESENTERS:

DARLENE KING-TURNER, CEO - THE UNITY COLLABORATIVE

JERRY PRICE, ADVISOR BELONGING PARTNER- COREWELL HEALTH



9:15 AM – 10:15 AM | PANEL DISCUSSION: FINDING YOUR NORTH STAR: LEADING FROM WITHIN

## PANELISTS/MODERATOR



Kate Henson  
Mayor  
Chelsea, MI



Captain Melissa McClellan  
Division Commander  
Oakland County  
Sheriff's Department



Melissa Kamara Liggins  
Senior Director  
Communications  
Corewell Health



Jenny Piatt  
Bureau Division Director  
Michigan Rehabilitation  
Services



Darlene King-Turner  
CEO  
The Unity Collaborative (TUC)

10:15 AM – 10:45 AM | NETWORKING

10:45 AM – 11:15 AM | WOMEN OF MERIT AWARD CEREMONY

PRESENTERS:

JODY GUASTELLA JONES, ADVISORY BOARD MEMBER - THE UNITY COLLABORATIVE

REBECCA IRBY, FOUNDING PARTNER & BOARD PRESIDENT - PEAC INSTITUTE

## AWARDEES



Kecia Rorie  
Director of Early  
Childhood Education  
Starfish Family Services



Dr. Rola Bazzi-Gates  
Special Education Coordinator  
Dearborn Public Schools



Ellen Gilchrist  
CEO  
BasBlue



Dana Lasenby  
CEO/Executive Director  
Oakland Community  
Health Network



Sairy Garcia  
Manager of  
Global Resources  
Oakland Thrive

11:15 AM – 12:25 PM | PANEL DISCUSSION: CHARTING THE PATH FORWARD: GROWTH, INFLUENCE, AND IMPACT

## PANELISTS/MODERATOR



Poppy Hernandez  
Chief Equity and Inclusion Officer  
Executive Office of the Governor  
State of Michigan



Tina Alonzo  
VP of Belonging  
Peckham



Camille Walker-Banks  
CEO  
Oakland Thrive



Trisha Zizumbo  
Chief Operating Office  
Oakland Community Health  
Network



Darlene King-Turner  
CEO  
The Unity Collaborative

12:25 PM – 12:30 PM CLOSING REFLECTION

# Speakers & Moderator



**PANELIST**

**Tina Alonzo**  
Vice President of Belonging  
Peckham, Inc.



**PANELIST**

**Kate Henson**  
Mayor  
City of Chelsea, Michigan



**PANELIST**

**Melissa Kamara Liggins**  
Senior Director of Communications  
Corewell Health



**PANELIST**

**Poppy Hernandez**  
Chief Equity & Inclusion Officer  
Executive Office - State of Michigan



**PANELIST**

**Melissa McClellan**  
Captain, Division Commander  
Oakland County Sheriff's Department



**PANELIST**

**Camille Walker-Banks**  
CEO  
Oakland Thrive



**PANELIST**

**Jenny Piatt**  
Bureau Division Director  
Michigan Rehabilitation Services



**PANELIST**

**Trisha Zizumbo**  
Chief Operating Officer  
Oakland Community Health Network



**Darlene King - Turner**  
CEO  
The Unity Collaborative

# Women of Merit Awardees



**Dana Lasenby**  
Executive Director & CEO  
Oakland Community Health Network



**Kecia Rorie**  
Director of Early Childhood Education  
Starfish Family Services



**Sairy Garcia**  
Manager of Global Resources  
Oakland Thrive



**Ellen Gilchrist**  
CEO  
BasBlue



**Dr. Rola Bazzi-Gates**  
Special Education Coordinator  
Dearborn Public Schools

# 2026 CALENDAR OF EVENTS

**MARCH 24**

**WOMEN IN LEADERSHIP SUMMIT**



**INCLUSIVE INSIGHTS**

**APRIL 22  
 NOVEMBER 11**

**APRIL 30**

**ERG SUMMIT**

**YOUTH LEADERSHIP SUMMIT**

**MAY  
 OCTOBER**

**JUNE**

**EMPOWERED TO SCALE**

**POWER OF CONNECTION**

**JUNE 16  
 OCTOBER 20**

**AUGUST 13**

**NATIONAL BLACK MEN IN LEADERSHIP**

**LEGAL & LAW SUMMIT**

**SEPTEMBER 29**

# All.



# Better.



We'll never stop pursuing better health  
for everyone in our communities.

[corewellhealth.org](https://corewellhealth.org)





# Who you are is who we are.

Inclusive workplaces provide more opportunities, increase innovation, and improve results. Differences truly do make a difference. And the right partner can make a difference. A partner that leverages the power of the world's largest risk management, strategy, and benefits firm – and is a part of your world, too. A partner like Marsh McLennan Agency.

Learn how we can help you thrive: [Gary.Abernathy@MarshMMA.com](mailto:Gary.Abernathy@MarshMMA.com)



**Your future is limitless.™**



AAA IS A *Proud Supporter* OF THE UNITY  
COLLABORATIVE WOMEN IN LEADERSHIP SUMMIT.

We are as unique as our fingerprints that mark individual human identity. Great things happen when we come together and connect our unique talents, ideas, cultures and experiences.





8,000 people  
power 6.8 million lives.

Kelsea Salgado  
Undergrounding Utility Worker

Our jobs may look different but our goal is the same: power the moments that matter most. From lighting classrooms and sparking imaginations to keeping homes comfortable year-round, we deliver the energy – and you give it life.

Counting the ways you can count on us.

**Consumers Energy** Count on Us®

*Elite School Management*



*Elite Educators Insurance*

*Elevating  
Excellence  
in Education*



*Elite Diversity Staffing*



*Elite School Staffing*



*Elite Janitorial & PPE*



*Elite Training Institute*

**The Elite Group**  
26211 Central Park Blvd. Suite 100, 110 & 300  
Southfield MI. 48076  
248-595-8773



THE POWER IN ALL OF US

## Empowering one another.

There's power in bringing diverse voices and perspectives to the table. Amplifying positive ideas. And supporting efforts that create real solutions in our Michigan neighborhoods.

We're proud to support the 2026 Women in Leadership Summit. Encouraging and supporting women in their pursuit to create change. And inspire future generations.

Together, we can make an impactful change in our communities.

Visit [laketrust.org](https://laketrust.org) to learn more.

LAKE TRUST<sup>SM</sup>



***The Office of Inclusive Excellence  
at Wayne State University Congratulates***

***“The Unity Collaborative”  
on its efforts to advance transformative change within  
workspaces and communities.***

***“We're proud to be a partner in shaping the future.”***

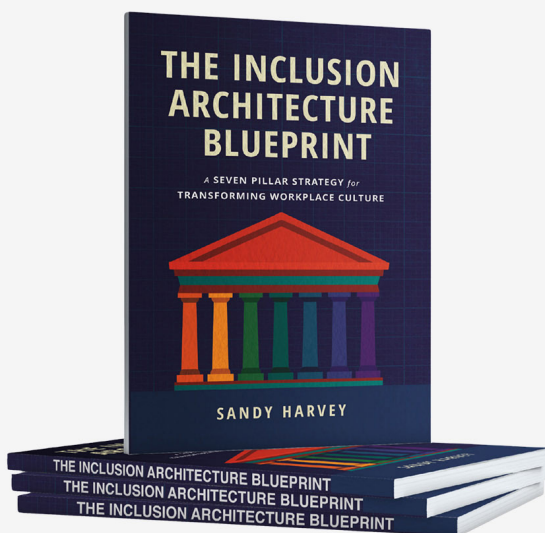


**Exodus Consulting Group** is honored to sponsor the **2026 Women in Leadership Summit** hosted by our partner and friends at **The Unity Collaborative**

**Exodus Consulting Group**  
Strategic Partners in Cultural Architecture & Leadership Excellence



**Sandy Harvey**  
President & Chief Inclusion Strategist  
*Strategist, Speaker, Author*



**Get your copy of The Inclusion Architecture Blueprint: A Seven Pillar Strategy for Transforming Workplace Culture on Amazon!**

**Exodus Consulting Group**  
[www.exodusconsultinggroup.com](http://www.exodusconsultinggroup.com)  
833.939.6387



Women  
**THRIVE**   
Conference  
*For Women In The Workplace*

# Save The Date

**Join Us May 21, 2026  
For The 30th Annual Women Thrive  
Conference & Awards  
MGM Grand, Detroit**

***“Honoring the Future,  
Embracing the Past”***

**Click Here to Register**

# Congratulations

It is with great pride and admiration that we congratulate Kecia Rorie, Director of Early Childhood Education Services at Starfish Family Services, on being selected as a recipient of The Unity Collaborative Woman of Merit Award.

Kecia exemplifies the very essence of this honor through her outstanding leadership, unwavering commitment to professional excellence, and profound impact on the communities she serves. Her dedication to advancing high-quality early childhood education, mentoring emerging leaders, and championing equity and opportunity for children and families continues to inspire those around her.

This recognition is a testament to Kecia's influence, vision, and passion for creating meaningful change. Her work not only strengthens programs but also uplifts communities and opens doors for future generations.

Congratulations, Kecia, on this well-deserved honor. Your leadership and legacy continue to make a lasting difference.



**STARFISH**  
FAMILY SERVICES

## Our Mission

Strengthening families to create brighter futures for children.

## Who We Are

Founded in 1963, Starfish Family Services is a nonprofit human service agency dedicated to supporting children, youth, adults, and families in Metro Detroit. Serving more than 3,000 children and their families annually, we provide high-quality programs and support services that focus on early childhood education and development, behavioral health, and empowered parents. Through our approach, Starfish partners with families so they have access to the right resources at the right time.



*"Kecia is a diamond in the rough as a leader. Her passion and commitment shine through in all that she does, and these strengths have deeply influenced and shaped the Early Childhood culture at Starfish. She brings heart, vision, and authenticity to her work, creating an environment where both staff and families feel supported and valued. She is the piece that makes our leadership team whole, and we are truly blessed to have her on our team. Congratulations Kecia!"*

**Roxanne Brinkerhoff**  
Chief Executive Officer  
Starfish Family Services



[www.starfishfamilyservices.org](http://www.starfishfamilyservices.org)

# Congratulations!

## DANA LASENBY

Executive Director & CEO, Oakland Community Health Network

Oakland Community Health Network congratulates Dana Lasenby on receiving The Unity Collaborative Women of Merit Award.

Her commitment to integrity, collaboration, and empowering others has made a lasting impact across the behavioral health system and the community we serve.



Oakland Community  
Health Network

Developmental Disabilities • Mental Health • Substance Recovery

ACCESS 248-464-6363  
CRISIS LINE 888-238-0611  
WWW.OAKLANDCHN.ORG



ERG Summit

# 2026 ERG SUMMIT

**SUSTAINING & SCALING INCLUSION:  
WORKFORCE SUSTAINABILITY AS  
A COMPETITIVE ADVANTAGE**

**THURSDAY, APRIL 30, 2026 | 8:30 AM – 4:00 PM**

**WALSH COLLEGE**

**3838 LIVERNOIS ROAD | TROY, MICHIGAN**

**JOIN US FOR A FULL DAY OF HIGH-IMPACT LEARNING, INTENTIONAL CONNECTION,  
AND STRATEGY TO BE PREPARED TO LEAVE AND TAKE ACTION!**

**THIS SUMMIT WILL EQUIP YOU TO:**

- Position your ERG as a driver of retention and talent strategy
- Scale inclusion efforts that deliver measurable business outcomes
- Build ERG structures resilient enough to sustain organizational change

**REGISTRATION: \$129  
(INCLUDES BREAKFAST & LUNCH)**

WWW.EXODUSCONSULTINGGROUP.COM/2026-ERG-SUMMIT-REGISTRATION



SCAN QR CODE  
TO REGISTER TODAY

HOSTED BY

**EXODUS**  
CONSULTING GROUP

**THE  
UNITY  
COLLABORATIVE**  
The Consortium of Organizational and Community Services





# NATIONAL BLACK MEN IN LEADERSHIP CONFERENCE

PURPOSE-DRIVEN LEADERSHIP  
LEAD.SERVE.ELEVATE

AUGUST 13<sup>TH</sup>





# LEGAL & LAW EQUITY SUMMIT

## Balancing the Scales EQUITY in ACTION

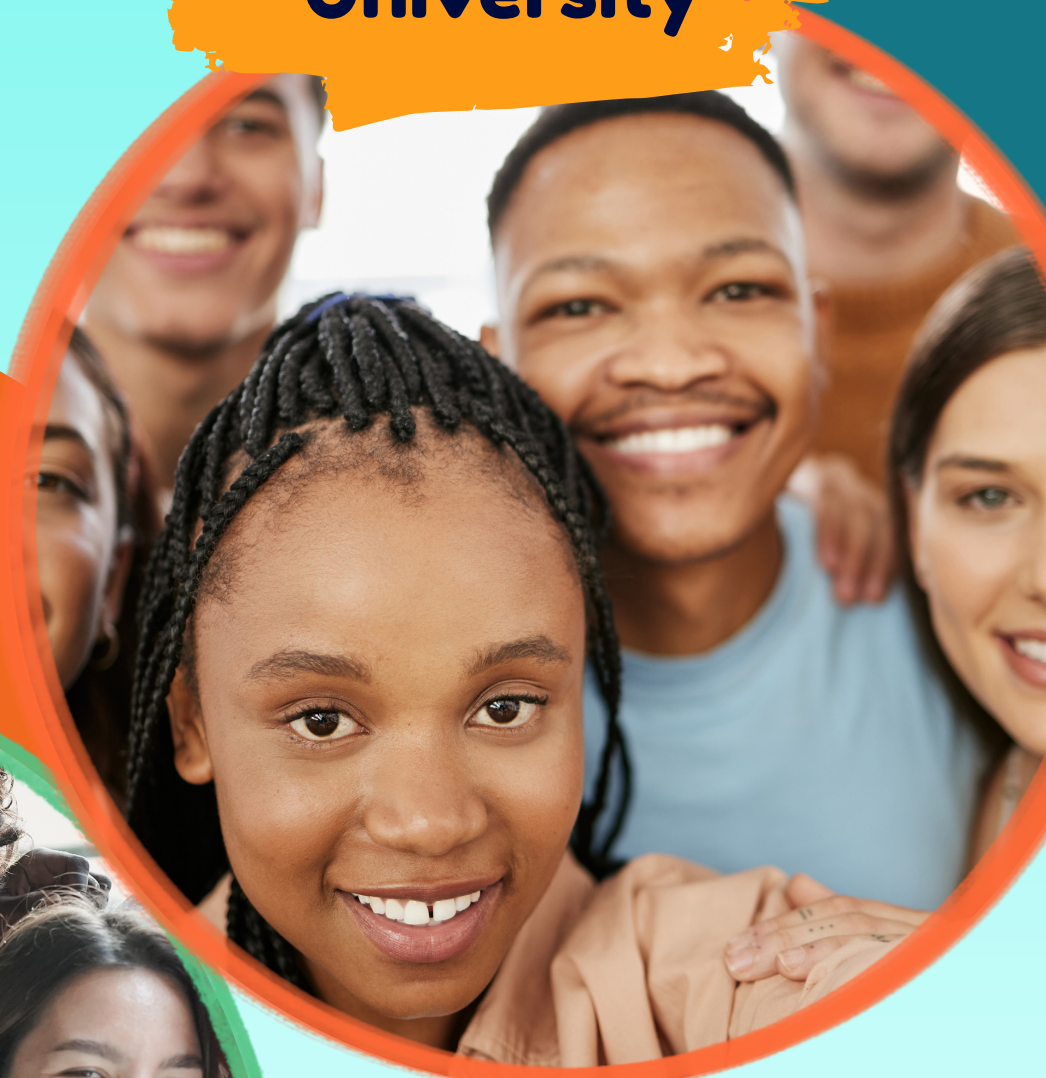
September 29, 2026  
Wayne State  
University

**REGISTER  
TODAY !**





**October 15th  
Wayne State  
University**



**KEY AREAS:**

- ✔ Work Force Development
- ✔ Career Exploration & Fair
- ✔ Leadership Development
- ✔ Civic Engagement
- ✔ Respect & Civility



**SPONSORED BY:**



**WAYNE STATE**  
Office of Inclusive Excellence



**FOR MORE INFORMATION, PLEASE CONTACT: [IVY@THEUNITYCOLLABORATIVE.COM](mailto:IVY@THEUNITYCOLLABORATIVE.COM)**



*The Unity Collaborative (TUC) proudly serves a broad range of partners across various sectors offering customized solutions designed to foster inclusivity, equity, and organizational growth.*



## **Inclusive Strategies & Solutions**

**Corporate and Non-Profit Partnership Development**

**Inclusion Strategy and Implementation**

**Events and Engagement**

**Consulting Services**

**Educational Programming**

**Leadership and Development Training**

**Benchmarking and Index Assessments**

**Metrics and Measurement Technology**

**Inclusion Council Development and Implementation**

**Employee Resource Group (ERG) Institute**

**Youth Leadership and Talent Development**

**Individual Membership**

**Surveys and Organizational Assessments**



**For more information about partnership, please contact [Darlene@theunitycollaborative.com](mailto:Darlene@theunitycollaborative.com)**

# THE UNITY COLLABORATIVE

The Cornerstone of Organizational and Community Success



## JOIN US!

The Unity Collaborative (TUC) is dedicated to fostering inclusive communities, amplifying underrepresented voices, and breaking down systemic barriers.

We strive to create spaces where diverse perspectives are valued, individuals feel empowered to lead, and opportunities for growth and success are accessible to all.

Through collaboration, education, and advocacy, we are driving lasting change that ensures equity and belonging in workplaces and communities.

[www.theunitycollaborative.org](http://www.theunitycollaborative.org)

For more information about TUC: [info@theunitycollaborative.com](mailto:info@theunitycollaborative.com)

# THANK YOU FOR ATTENDING THE 2026 WOMEN IN LEADERSHIP SUMMIT!



**The Unity Collaborative (TUC) is a 501(c)(3) nonprofit organization** focused on driving meaningful change by promoting inclusive, equitable, and belonging-centered cultures across organizations and communities. Our work is grounded in three pillars – **Youth and Family, Business, and Community**. We provide education that strengthens inclusive leadership, advocate for equitable practices, bring diverse partners together to advance shared goals, and offer guidance that empowers individuals and organizations to build and sustain cultures of belonging.

TUC offers a range of services designed to cultivate inclusion and fairness, including strategy development, events, consulting, training, as well as benchmarking resources, metrics, council development, and employee group support. Through educational programs and leadership development initiatives, we equip individuals and organizations to lead with purpose and create lasting impact.



For event and general information contact:

[ivy@theunitycollaborative.com](mailto:ivy@theunitycollaborative.com)

For corporate partnership and membership contact:

[info@theunitycollaborative.com](mailto:info@theunitycollaborative.com)